

W COSTA NAVARINO



WCostaNavarino.com



W COSTA NAVARINO

Have your Energy Liberated

Adult-friendly (12+)

W Costa Navarino marks the debut of W Hotels in Greece. The new adult-friendly (12+) Escape opened in August 2022 at Navarino Bay to infuse the Costa Navarino experience with inspiring energy and a fresh perspective. Vivid and bright, with a design inspired by the region's architecture, W Costa Navarino shows stylish rooms, suites and villas with private pools, playful public spaces including "Parelia" Beach Club, a wellness area with AWAY® Spa and FIT gym, and exciting programming around music, wellness, sports, fashion, and gastronomy.

**Voted in "Top 50 Best Resorts in the World"
at Condé Nast Traveler's 2023 Readers' Choice Awards**

ACCOMMODATION

NUMBER OF ROOMS: 226

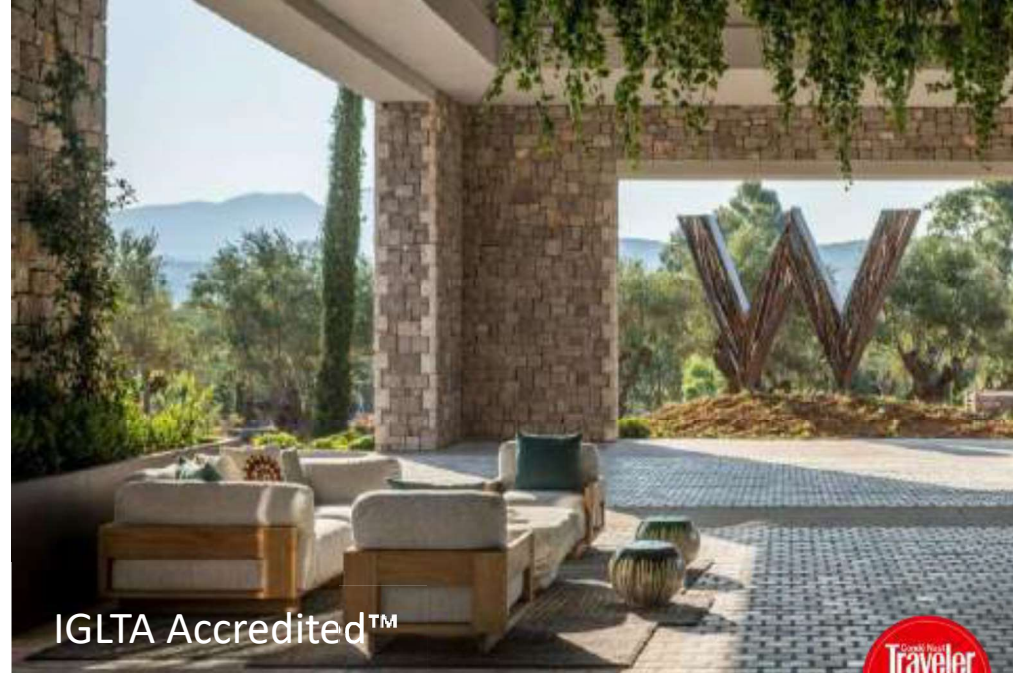
ROOM TYPES

- Wonderful Bay View Room
- Fabulous Infinity Swim up Room
- Spectacular Panorama Room
- WOW Agora Bayfront Rooftop Infinity Suite (1- and 2-bedroom)
- WOW Agora Beachfront Rooftop Infinity Suite (1- and 2-bedroom)
- WOW Bayfront Rooftop Infinity Suite (1- and 2-bedroom)
- WOW Beachfront Infinity Suite (1 and 2-bedroom)
- WOW Infinity 3-bedroom villa
- WOW Beachfront Infinity 3-Bedroom Villa
- EWOW Beachfront infinity 3-Bedroom Villa
- EWOW Beachfront infinity 2-Bedroom Villa

STANDARD ROOM FEATURES

All room types offer the following amenities:

- Signature W bed
- Ceiling fan
- A/C
- LCD TV with movies on demand (at a fee)
- Telephone
- Electronic safe
- Mini-bar/fridge (at a fee)
- Nespresso machine
- Tea/Coffee maker
- Free Wi-Fi
- Bathtub and/or shower
- Bathrobe
- Slippers
- Luxury amenities
- Lighted make-up mirror
- Steamer
- Hair dryer



HOTEL FACILITIES

- 5 Restaurants & Bars
- "Parelia" all-day Beach Club
- AWAY® Spa
- FIT gym
- 2 Boutiques onsite
- Complimentary parking area
- Watersports hub onsite
- Four 18-hole signature Golf Courses
- Mouratoglou Tennis Center
- Outdoor activities
- Adjacent Navarino Agora: an open marketplace with shops, dining venues, an open-air cinema, and varied happenings celebrating and showcasing the local culture and traditions.

POOLS & BEACH

- 450m-long sandy beach with loungers and umbrellas
- WET Deck infinity pool
- 25-meter outdoor lap pool
- 4 lagoon pools for swim-up rooms.

Condé Nast Traveler 2023 Hot List in:

Best new beach hotels
in the world

Best new wellness hotels
in the world

WATCH THE
VIDEO



226 STYLISH ROOMS,
SUITES & VILLAS

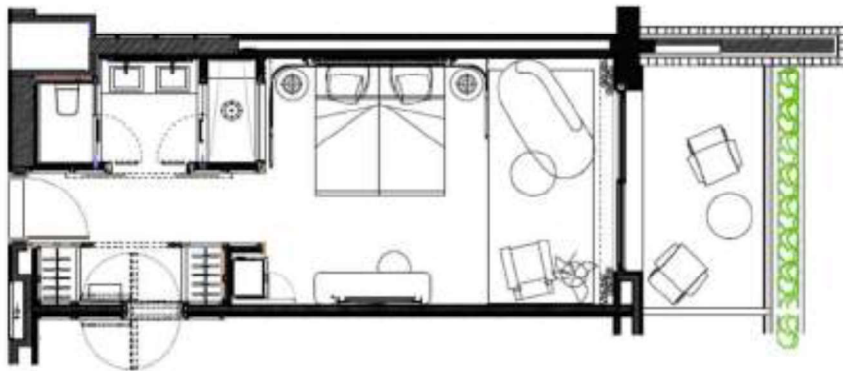




Wonderful Bay Room Seaview (40m²)

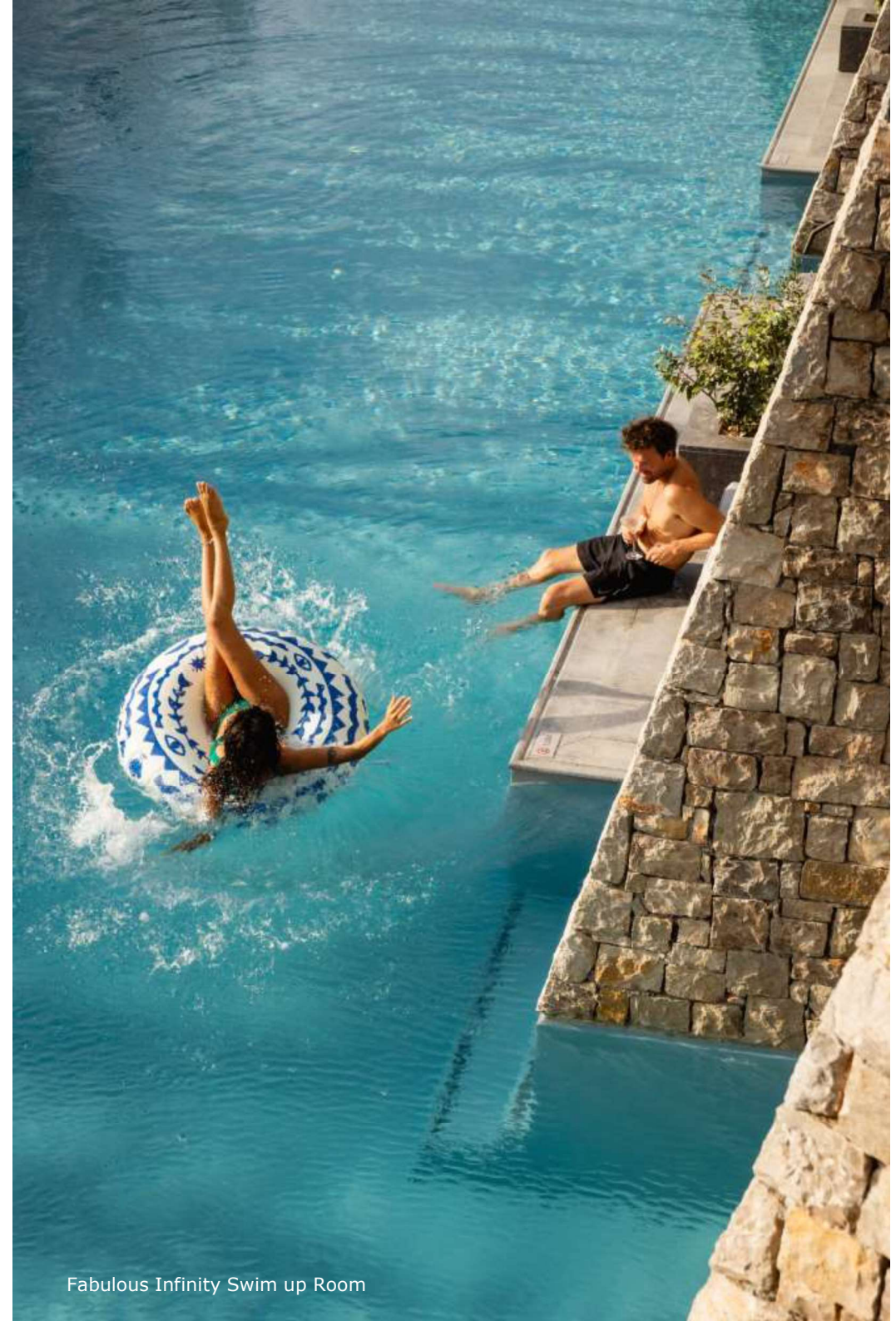
- 1st floor
- Partial Bay view
- Balcony
- King-size bed or twin beds
- Living/sitting area with sofa
- Sleeps max 3 adults /3rd person in Rollaway bed
- 55" LCD TV

Fabulous Bay View rooms are located on the first floor, offering partial sea views to Navarino Bay over the resort's WET Deck and gardens. The room interior celebrates the heritage of Greek artisans with a palette of neutral tones which are met with pops of color, and embraces the region's local, natural materials such as stone, wood and reed, and its furnished terrace connects with the buzz of the resort.



Fabulous Bay View Room – King bed

NOTE: Floor plan and image are indicative, actual layout or view may be different.



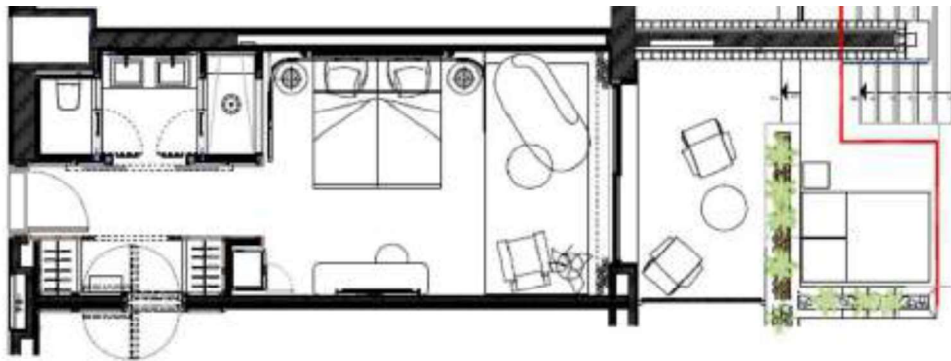
Fabulous Infinity Swim up Room



Fabulous Infinity Swim up Room Garden view (40m²)

- Ground floor
- Garden view
- Shared Infinity pool and Terrace
- King-size bed or twin beds
- Living/sitting area with sofa
- Sleeps max 3 adults /3rd person in Rollaway bed
- 55" LCD TV

Fabulous Infinity Swim-up rooms are located on the ground floor. With direct access to an expanded shared infinity pool, here you will definitely keep up with your social vibe. The room interior features a palette of neutral tones which are met with pops of color, and embraces the region's local, natural materials such as stone, wood and reed, while the spacious terrace area of 17m² offers a double sunbed for absolute relaxation and verdant gardens views.

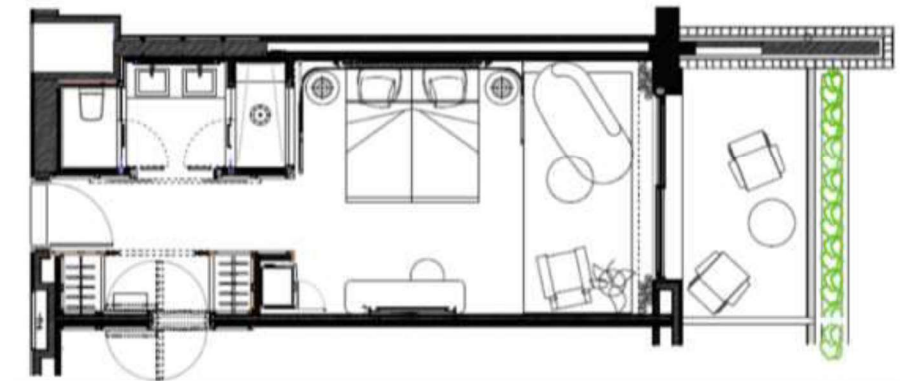


Spectacular Panorama Room Seaview (40m²)

- 2nd floor
- Direct Bay view
- Balcony
- King-size bed or twin beds
- Living/sitting area with sofa bed
- Sleeps max 3 adults /3rd person in Rollaway bed
- 55" LCD TV
- Connects to Spectacular Panorama room

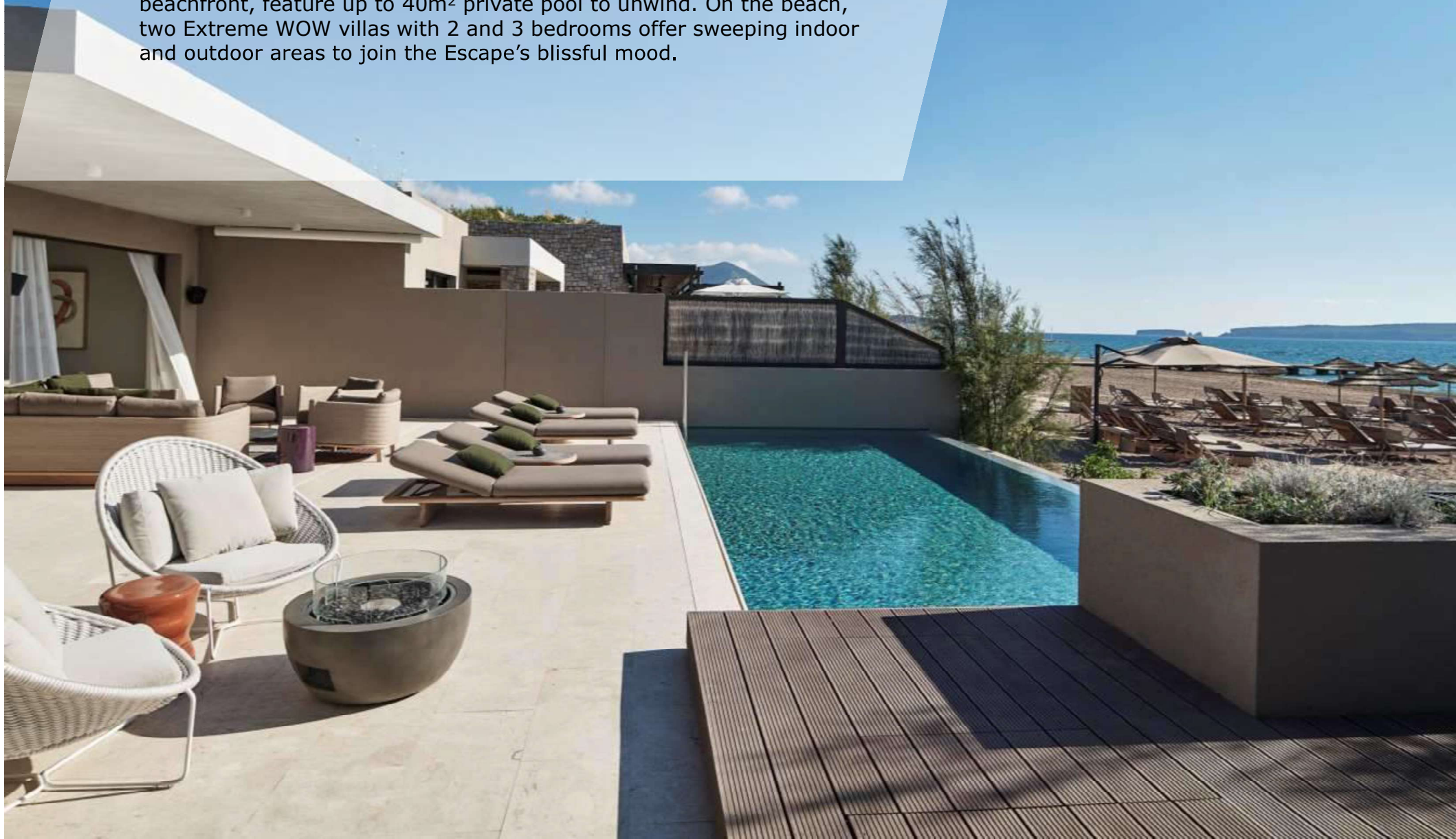


Spectacular Panorama rooms are located on the second floor, offering unobstructed sea views to the entire Navarino Bay and the resort's WET Deck and gardens toward the beach. The room interior features a palette of neutral tones, met with pops of color, embracing the region's local, natural materials such as stone, wood and reed, while its furnished terrace directly connects with Escape's atmosphere.



SUITES & VILLAS

Spacious 1- or 2-bedroom WOW Suites set your own pool just few steps from the beach, or rooftop, looking out over the splendor of Navarino Bay. Superb 3-bedroom WOW Villas in the gardens or beachfront, feature up to 40m² private pool to unwind. On the beach, two Extreme WOW villas with 2 and 3 bedrooms offer sweeping indoor and outdoor areas to join the Escape's blissful mood.





THE SUITE LIVING



All Suites with private pool

- 1- or 2-bedroom WOW Agora Bayfront Infinity Suites
- 1- or 2-bedroom WOW Agora Beachfront Infinity Suites
- 1- or 2-bedroom WOW Beachfront Infinity Suites
- 1- or 2-bedroom WOW Bayfront Infinity Suites

WOW Suites bespoke amenities for stays of 3 nights or longer:

- Complimentary roundtrip transfer from Kalamata airport (KLX)
- Bottle of French Champagne upon arrival
- VIP Signature welcome amenities
- Daily breakfast in the Suite upon request
- Dedicated WOW Curator
- Signature "From our Garden Cocktail" at Wet Deck
- Tailormade Suite amenities
- Daily turndown amenities
- Access to AWAY Spa Facilities with one complimentary Led Mask Therapy (one per adult per stay)
- Cinema Experience in Navarino Agora





WOW Agora Beachfront Infinity 1-bedroom Suite (70m²)

- Located at Navarino Agora
- Ground floor
- Unobstructed sea view
- Individual Infinity pool
- Direct access to the beach
- King-size bed
- Living room and dining area
- Sleeps max 3 adults (1 person in rollaway bed)
- 2 LCD TVs (55" to 75")

WOW Agora Beachfront Infinity 1-bedroom Suite is located at Navarino Agora. The suite offers wide-open sea views over the Ionian Sea, and direct access to the beach through its expansive outdoor living space – ranging from 90 to 150m² and its 19-27m² private pool. The suite interior features one en-suite bedroom with king-size bed, one bathroom, and an elegant living room and dining area, all embracing the region's neutral tones' palette and natural materials such as stone, wood and reed.



WOW Agora Bayfront Rooftop Infinity 1-bedroom Suite (70m²)

- Located at Navarino Agora
- 1st floor
- Unobstructed sea view
- Individual rooftop Infinity pool
- 48 sqm rooftop terrace
- King-size bed
- Living room and dining area
- Sleeps max 3 adults (1 person in rollaway bed)
- 3 LCD TVs (55" to 75")

WOW Agora Bayfront Infinity 1-bedroom Suite is located at Navarino Agora. The suite offers wide-open sea views, while the spacious 48m² rooftop terrace hosts a 26-29m² private infinity pool with panorama views over Navarino Bay. The suite interior features one en-suite bedroom with king-size bed, one bathroom, and an elegant living room and dining area, all embracing the region's neutral tones' palette and natural materials such as stone, wood and reed.



NOTE: Floor plan and image are indicative, actual layout or view may be different.



WOW Agora Beachfront Infinity 2-bedroom Suite (100m²)

- Located at Navarino Agora
- Ground floor
- Unobstructed sea view
- Individual Infinity pool
- Direct access to the beach
- 2 bedrooms
- Living room and dining area
- Sleeps max 4 adults
- 3 LCD TVs (55" to 75")

WOW Agora Beachfront Infinity 2-bedroom Suite is located at Navarino Agora. The suite enjoys wide-open sea views over the Ionian Sea and direct access to the beach through its expansive outdoor living space, ranging from 90 to 150m² and its 19-27m² private pool. The suite interior features one bedroom with king-size bed and en-suite bathroom, a second bedroom with twin beds and a bathroom, and an elegant living room and dining area, all embracing the region's neutral tones' palette and natural materials such as stone, wood and reed.



WOW Agora Bayfront Rooftop Infinity 2-bedroom Suite (100m²)

- Located at Navarino Agora
- 1st floor
- Unobstructed sea view
- Individual rooftop Infinity pool
- 48 sqm rooftop terrace
- 2 bedrooms
- Living room and dining area
- Sleeps max 4 adults
- 3 LCD TVs (55" to 75")



WOW Agora Bayfront Infinity 2-bedroom Suite is located at Navarino Agora. The suite enjoys panorama sea views, while the spacious 48m² rooftop terrace with the 26-29m² private pool looks out over the splendor of Navarino Bay. The suite interior features one bedroom with king-size bed and en-suite bathroom, a second bedroom with twin beds and bathroom, and an elegant living room and dining, all embracing the region's neutral tones' palette and natural materials such as stone, wood and reed.



NOTE: Floor plan and image are indicative, actual layout or view may be different.



WOW Beachfront Infinity 1-bedroom Suite (70m²)

- Ground floor
- Unobstructed sea view
- Individual Infinity pool
- Direct access to the beach
- 90-150 m² outdoor living area
- King-size bed
- Living room and dining area
- Sleeps max 3 adults (1 person in rollaway bed)
- 2 LCD TVs (55" to 75")

WOW Beachfront Infinity 1-bedroom Suite offers wide-open sea views over the Ionian Sea, and direct access to the beach through its expansive outdoor living space – ranging from 90 to 150m² and its 19-27m² private pool. The suite interior features one en-suite bedroom with king-size bed, one bathroom, and an elegant living room and dining area, all embracing the region's neutral tones' palette and natural materials such as stone, wood and reed.



WOW Bayfront Rooftop Infinity 1-bedroom Suite (70m²)

- 1st floor
- Unobstructed sea view
- Individual rooftop Infinity pool
- 48 sqm rooftop terrace
- King-size bed
- Living room and dining area
- Sleeps max 3 adults (1 person in rollaway bed)
- 2 LCD TVs (55" to 75")



WOW Bayfront Infinity 1-bedroom Suite offers wide-open sea views, while the spacious 48m² rooftop terrace hosts a 26-29m² private rooftop infinity pool that looks out over the splendor of Navarino Bay. The suite interior features one en-suite bedroom with king-size bed, one bathroom, and an elegant living room and dining area, all embracing the region's neutral tones' palette and natural materials such as stone, wood and reed.



NOTE: Floor plan and image are indicative, actual layout or view may be different.



WOW Beachfront Infinity 2-bedroom Suite (100m²)

- Ground floor
- Unobstructed sea view
- Individual Infinity pool
- Direct access to the beach
- 90-150 m² outdoor living area
- 2 bedrooms
- Living room and dining area
- Sleeps max 4 adults
- 3 LCD TVs (55" to 75")

WOW Beachfront Infinity 2-bedroom Suite offers wide-open sea views over the Ionian Sea, and direct access to the beach through its expansive outdoor leaving space – ranging from 90 to 150m² and its 19-27m² private pool. The suite interior features one en-suite bedroom with king-size bed and bathroom, a second bedroom with twin beds and bathroom, and an elegant living room and dining area - all embracing the region's neutral tones' palette and natural materials such as stone, wood and reed.



WOW Bayfront Rooftop Infinity 2-bedroom Suite (100m²)

- 1st floor
- Unobstructed sea view
- Individual rooftop Infinity pool
- 48 sqm rooftop terrace
- 2 bedrooms
- Living room and dining area
- Sleeps max 4 adults
- 3 LCD TVs (55" to 75")



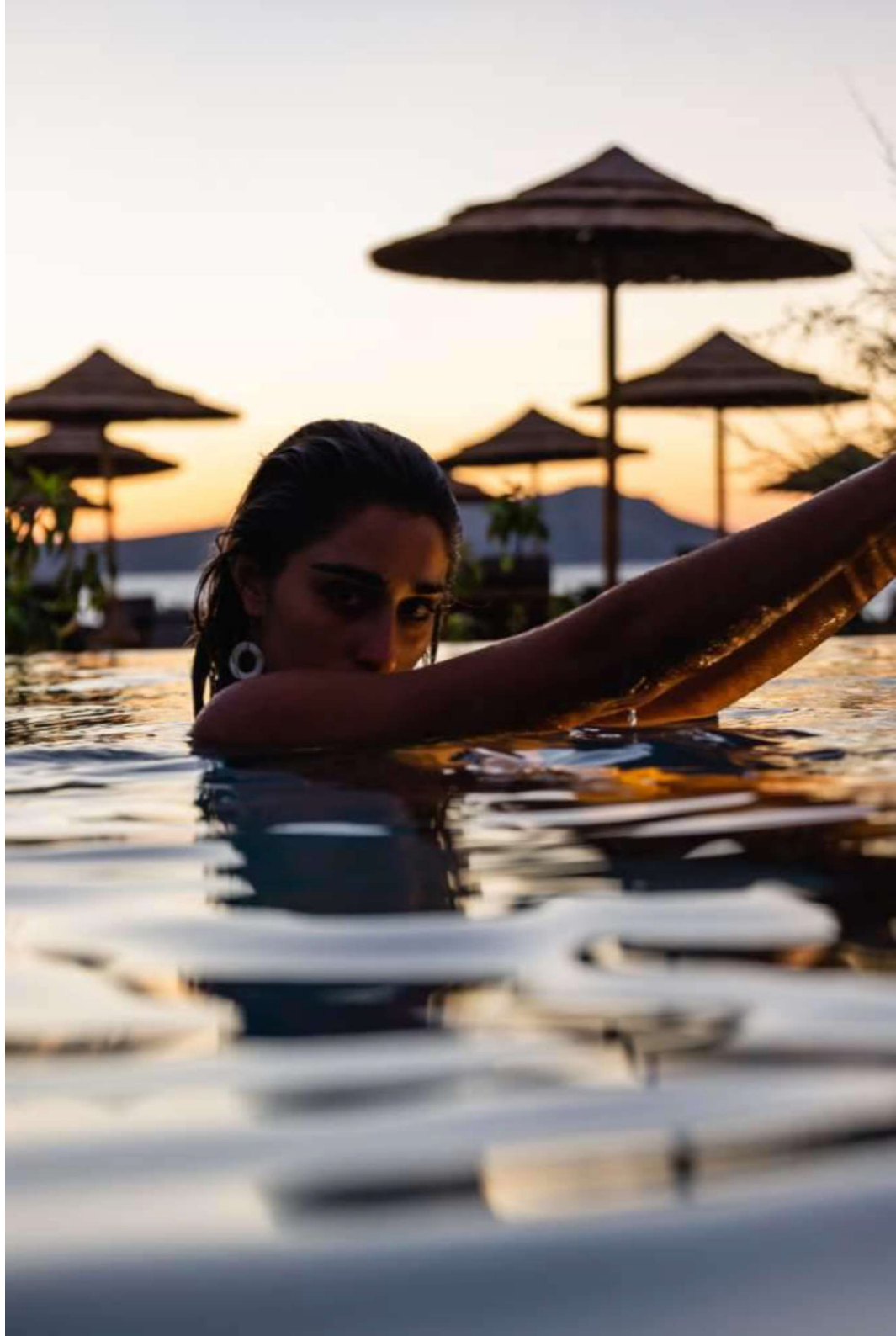
WOW Bayfront Infinity 2-bedroom Suite offers wide-open sea views, while the spacious 48m² rooftop terrace that also hosts a 26-29m² private rooftop pool looks out over the splendor of Navarino Bay. The suite interior features one en-suite bedroom with king-size bed and bathroom, a second bedroom with twin beds and bathroom, and an elegant living room and dining area - all embracing the region's neutral tones' palette and natural materials such as stone, wood and reed.



NOTE: Floor plan and image are indicative, actual layout or view may be different.



THE VILLA EXPERIENCE



All Villas with private pool

WOW Infinity 3-bedroom villa

WOW Beachfront Infinity 3-Bedroom Villa

EWOW Beachfront infinity 3-Bedroom Villa

EWOW Beachfront infinity 2-Bedroom Villa

WOW Villas bespoke amenities for stays of 3 nights or longer:

- Complimentary roundtrip transfer from Kalamata airport (KLX) or Athens Airport (ATH)
- Bottle of French Champagne upon arrival
- VIP Signature welcome amenities
- Daily breakfast in the Villa upon request
- Dedicated WOW Curator
- By the shimmering pool of the villa, awaits a bottle of premium champagne and a selection of exquisite fruits
- Signature "From our Garden Cocktail" at Wet Deck
- Tailor-made Villa amenities
- Daily turndown amenities
- Access to AWAY Spa Facilities with one complimentary Led Mask Therapy (one per adult per stay)
- Cinema Experience in Navarino Agora





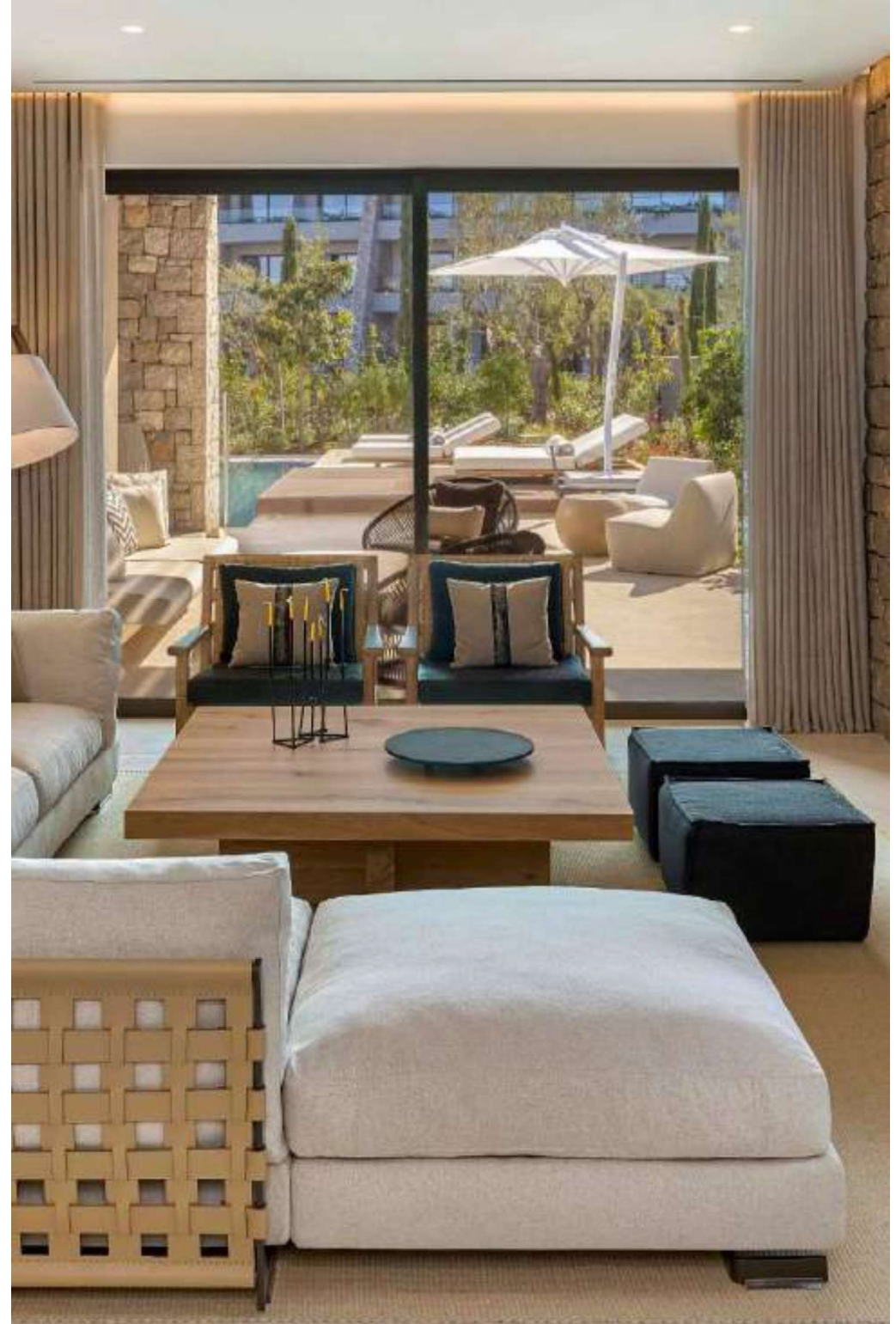
WOW Infinity 3-bedroom Villa (127m²)

- Garden view
- Private Infinity pool
- 3 bedrooms
- Extended terrace with outdoor living and dining areas
- Fully equipped pantry
- Sleeps max 6 adults
- 4 LCD TVs (55" to 75")

This WOW Infinity Villa covers a total interior area of 127m² and can accommodate up to 6 guests across a master bedroom with en-suite bathroom facilities, a second twin bedroom with zip & link beds and its own bathroom, and a third room with double sofa bed that can convert to a double bed (1.60x1.98m), again with its private bathroom. There's also a living room and dining area, while the expanded outdoor space - open to the Escape's gardens, features a comfortable living and dining space by the 40m² individual infinity pool.



NOTE: Floor plan and image are indicative, actual layout or view may be different.







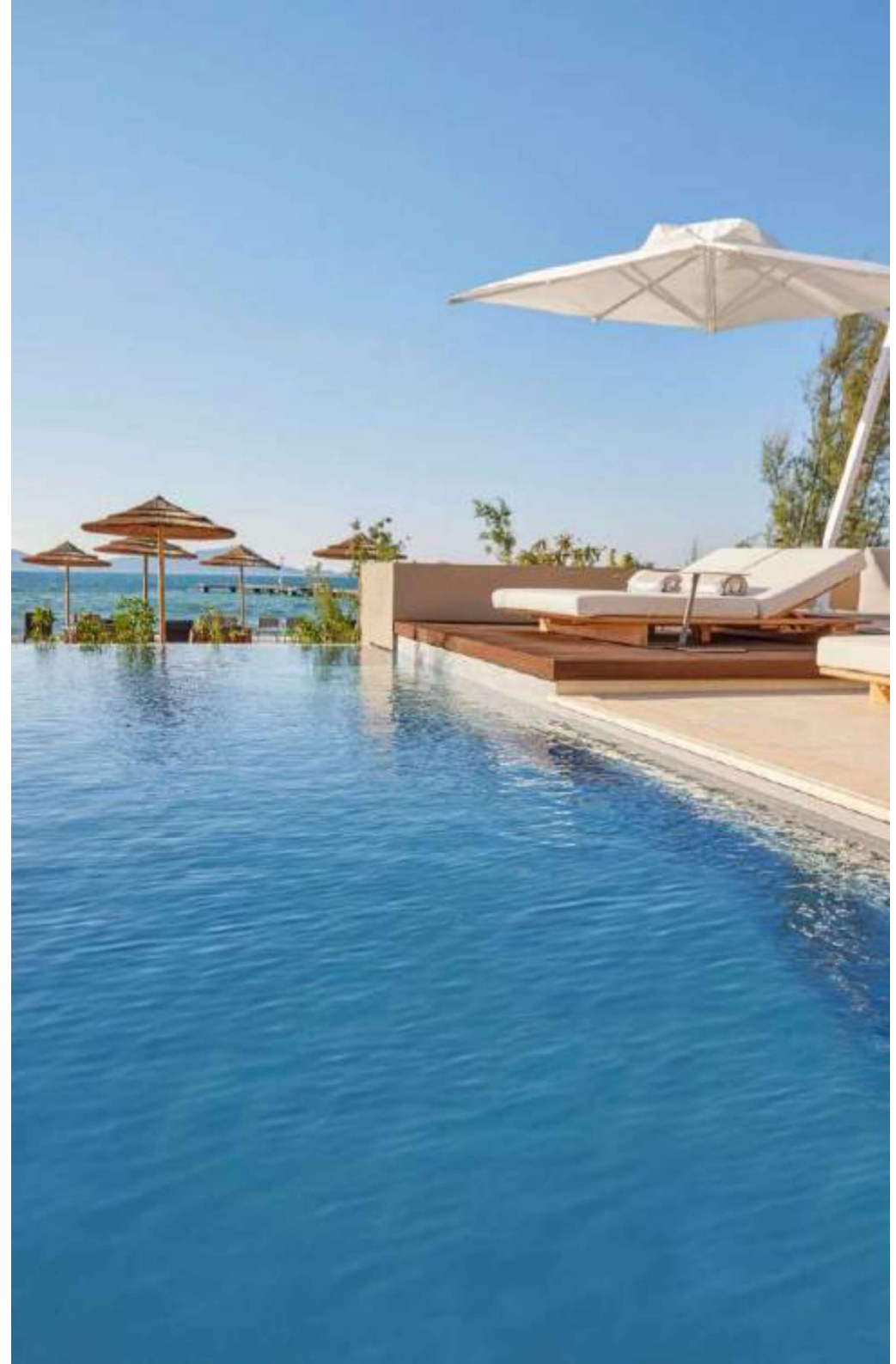
WOW Beachfront Infinity 3-bedroom Villa (127m²)

- Unobstructed sea view
- Private Infinity pool
- 3 bedrooms
- Extended terrace with outdoor living and dining areas
- Fully equipped pantry
- Sleeps max 6 adults
- 4 LCD TVs (55" to 75")

This WOW Beachfront Infinity Villa covers a total interior area of 127m² and can accommodate up to 6 guests across a master bedroom with en-suite bathroom facilities, a second twin bedroom with zip & link beds and its own bathroom, and a third room with double sofa bed that can convert to a double bed (1.60x1.98m), again with its private bathroom. There's also a living room and dining area. The expanded outdoor space directly connects to the sandy beach, while gazing the infinity of the Ionian Sea, and features a comfortable living and dining area by a private infinity pool ranging from 29m² to 40m².



NOTE: Floor plan and image are indicative, actual layout or view may be different.







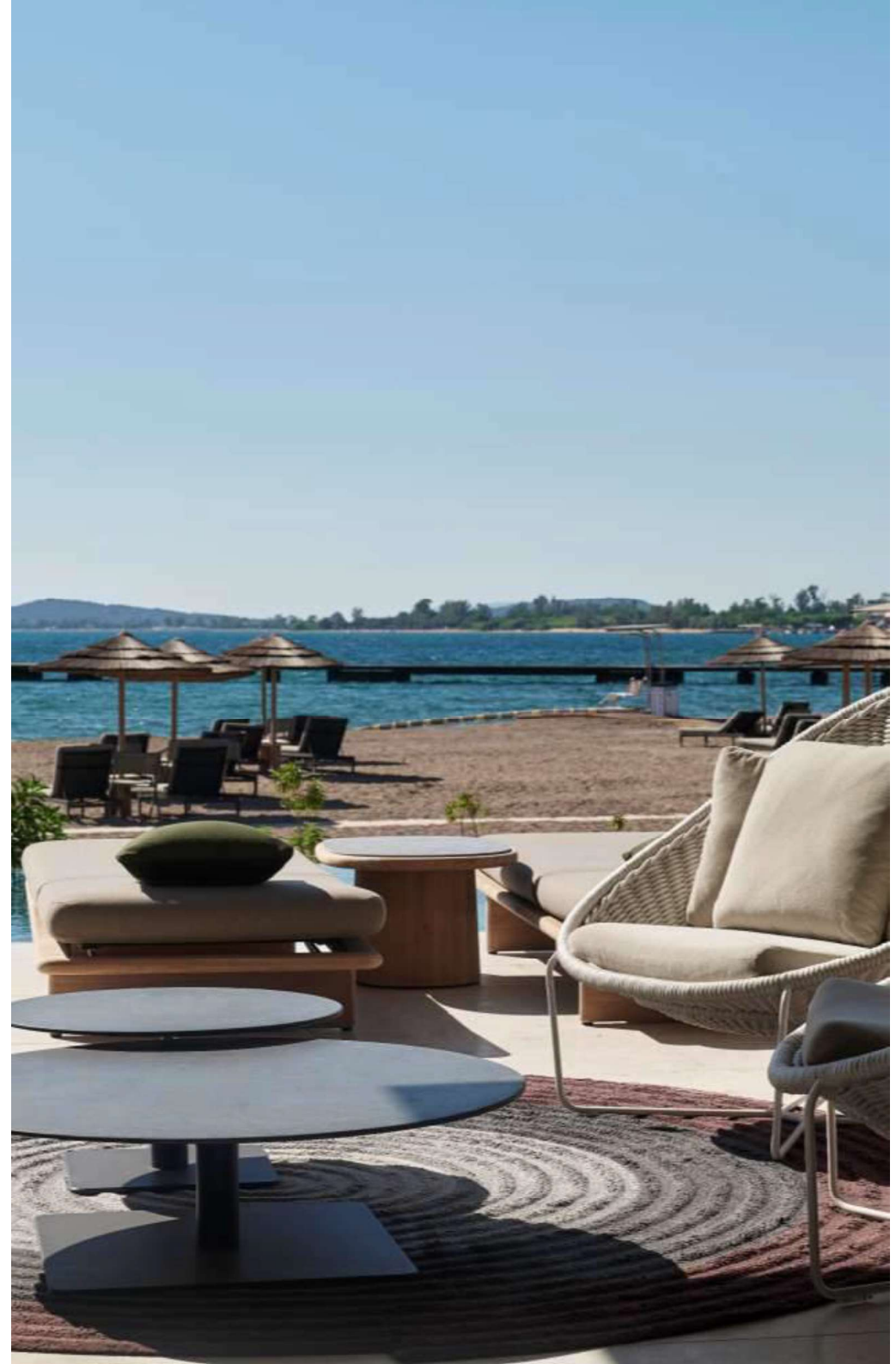
EWOW Beachfront Infinity 2-bedroom Villa (153m²)

- Unobstructed sea view
- Private Infinity pool
- 2 bedrooms (1 king & 1 Twin)
- Extended terrace with outdoor living and dining areas
- Fully equipped pantry
- Sleeps max 4 adults
- 3 LCD TVs (55" to 75")

Go even further with your stay experience! The EWOW Beachfront Infinity Villa covers a total interior area of 153m² and can accommodate up to 4 guests across a master bedroom with en-suite bathroom facilities and a second twin bedroom with zip & link beds and its own bathroom. There's also a separate lounge, a bar, a fully equipped open kitchen, and a dining area. The expanded outdoor space directly connects to the sandy beach and features a relaxed living and dining area, a bar and an outdoor screen with projector, along with a private infinity pool of 39m² facing the magnificent Ionian sunset.



NOTE: Floor plan and image are indicative, actual layout or view may be different.









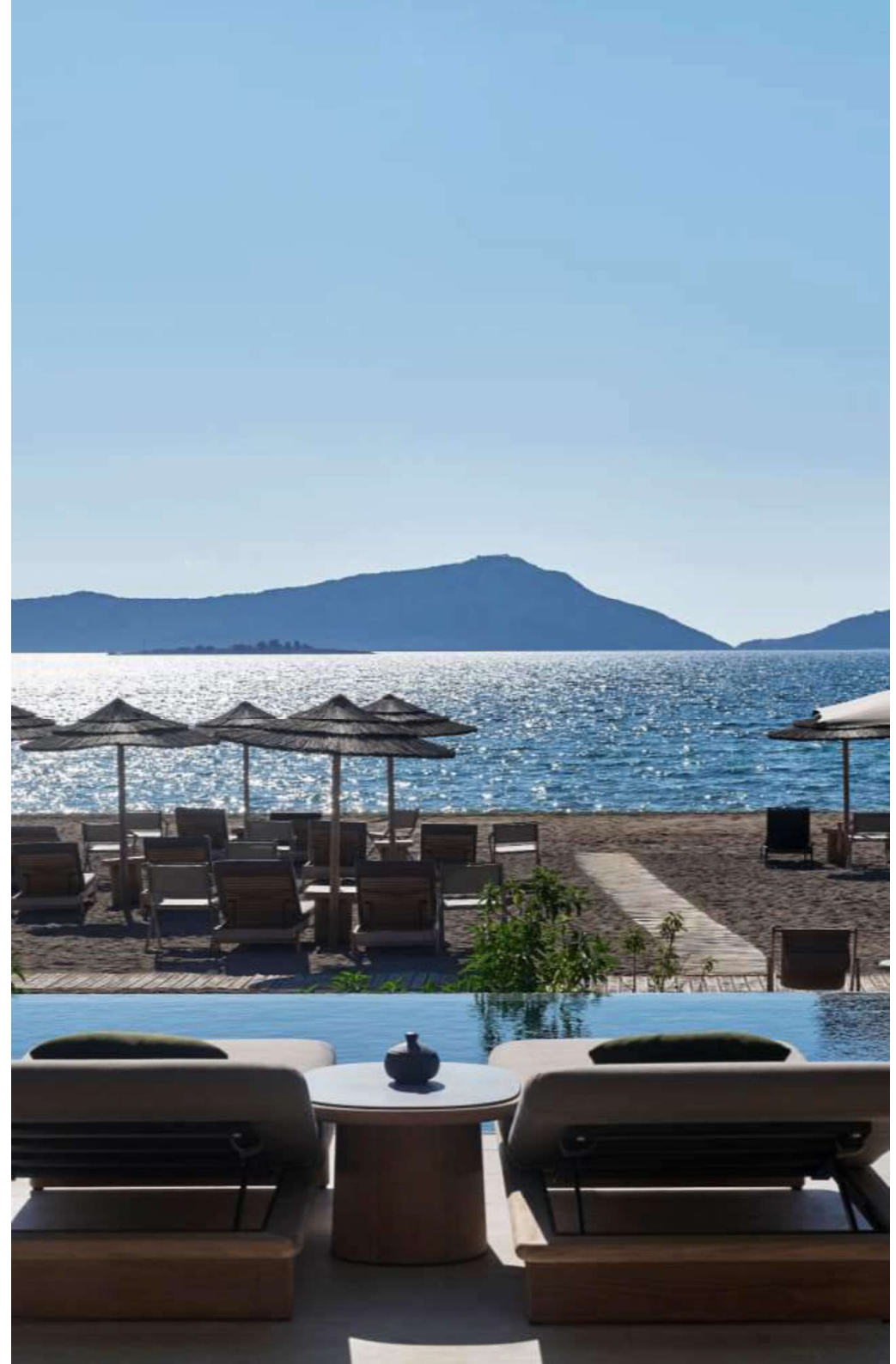
EWOW Beachfront Infinity 3-bedroom Villa (153m²)

- Unobstructed sea view
- Private Infinity pool
- 3 bedrooms (2 king & 1 twin)
- Extended terrace with outdoor living and dining areas
- Fully equipped pantry
- Sleeps max 6 adults
- 4 LCD TVs (55" to 75")

Go even further with your stay experience! The EWOW Beachfront Infinity Villa covers a total interior area of 153m² and can accommodate up to 6 guests across a master bedroom with en-suite bathroom facilities, a second twin bedroom with zip & link beds and its own bathroom, and a third bedroom with king-size bed, again with its private bathroom. There's also a separate lounge and dining area and a fully equipped kitchen indoors, while the spacious terrace directly connects to the sandy beach and features a relaxed living and dining space along with a private infinity pool of 39m² set against the captivating Ionian sunset.



NOTE: Floor plan and image are indicative, actual layout or view may be different.

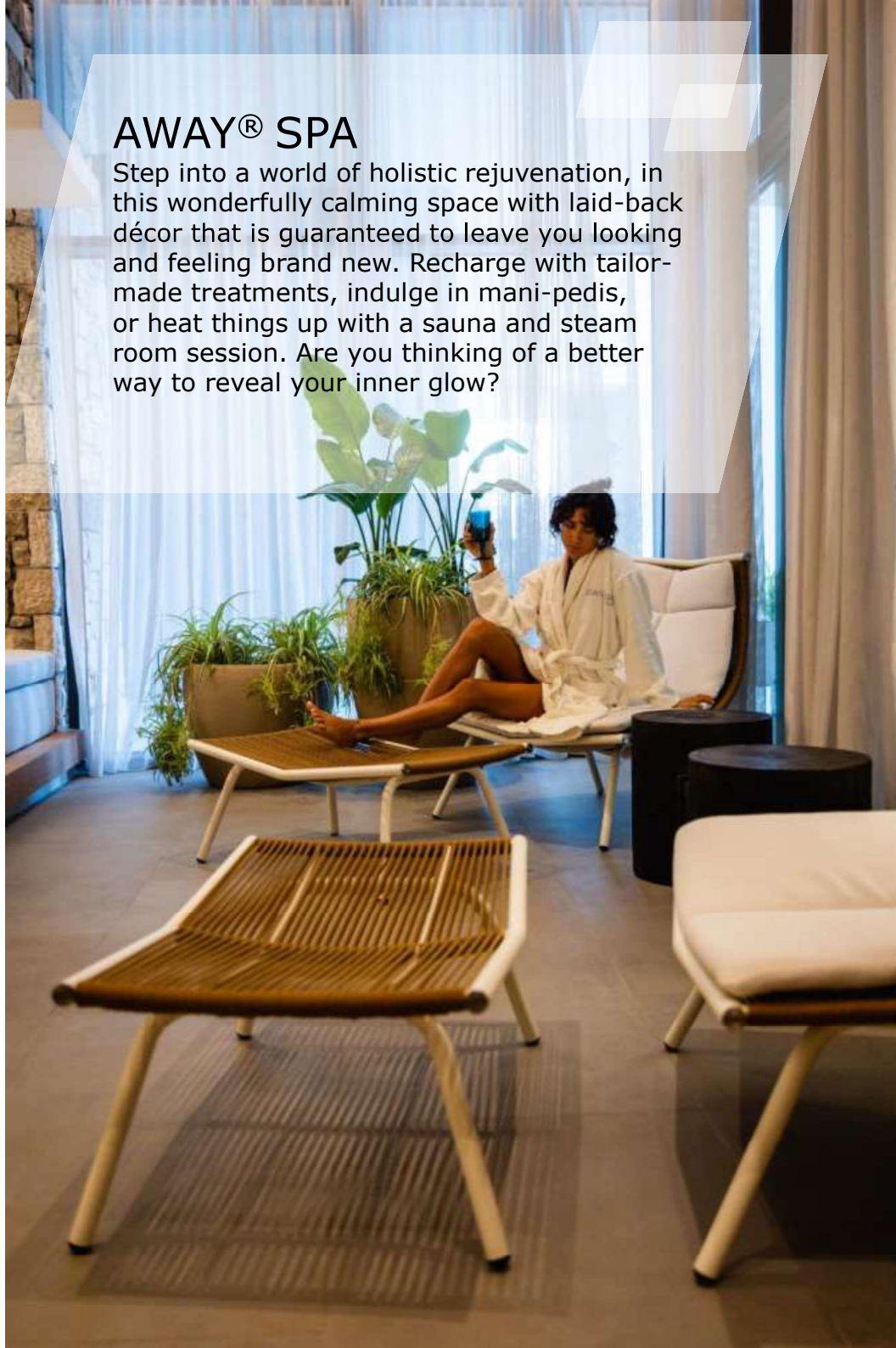






AWAY® SPA

Step into a world of holistic rejuvenation, in this wonderfully calming space with laid-back décor that is guaranteed to leave you looking and feeling brand new. Recharge with tailor-made treatments, indulge in mani-pedis, or heat things up with a sauna and steam room session. Are you thinking of a better way to reveal your inner glow?



Treatment Menu

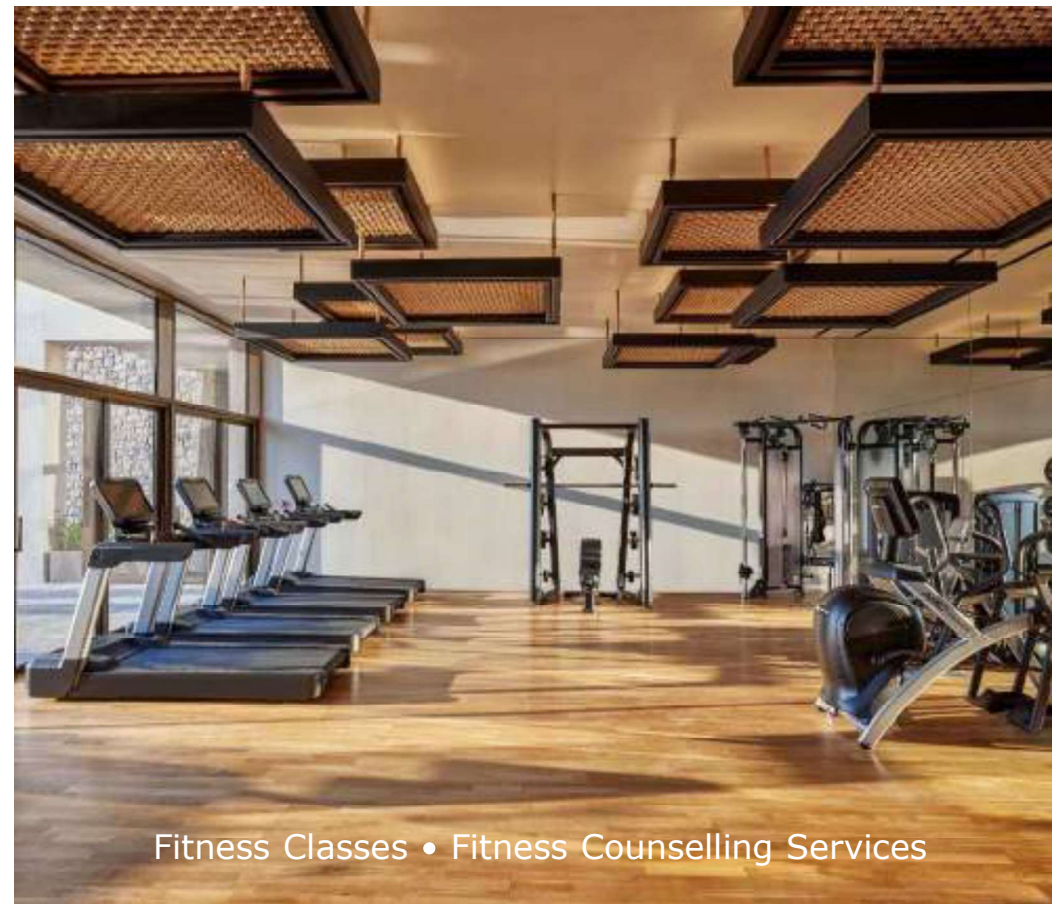
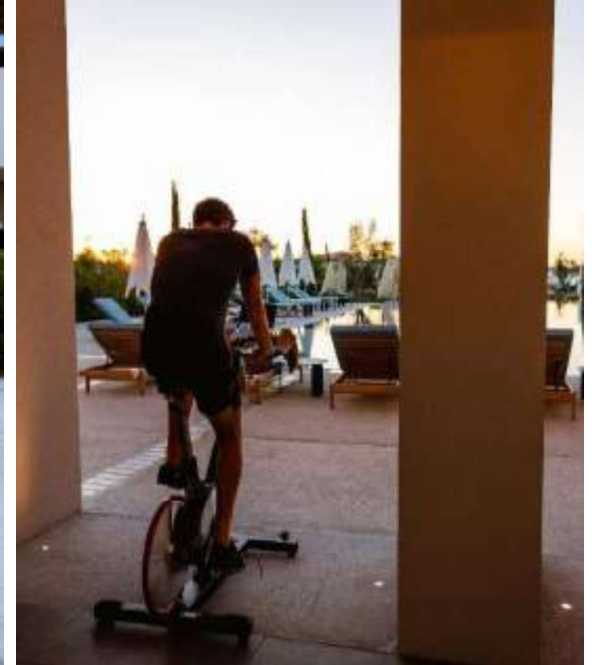
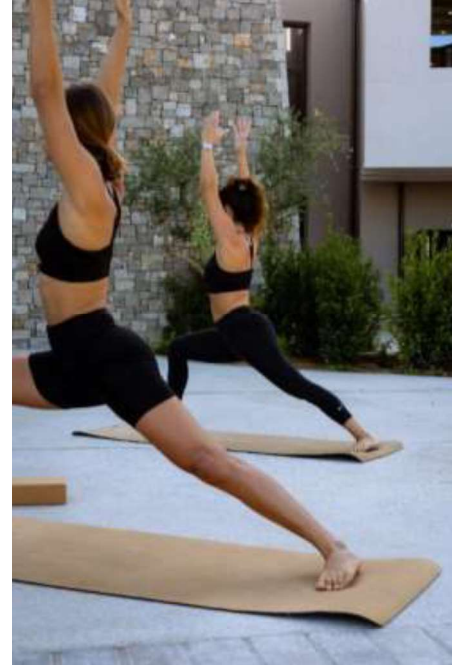
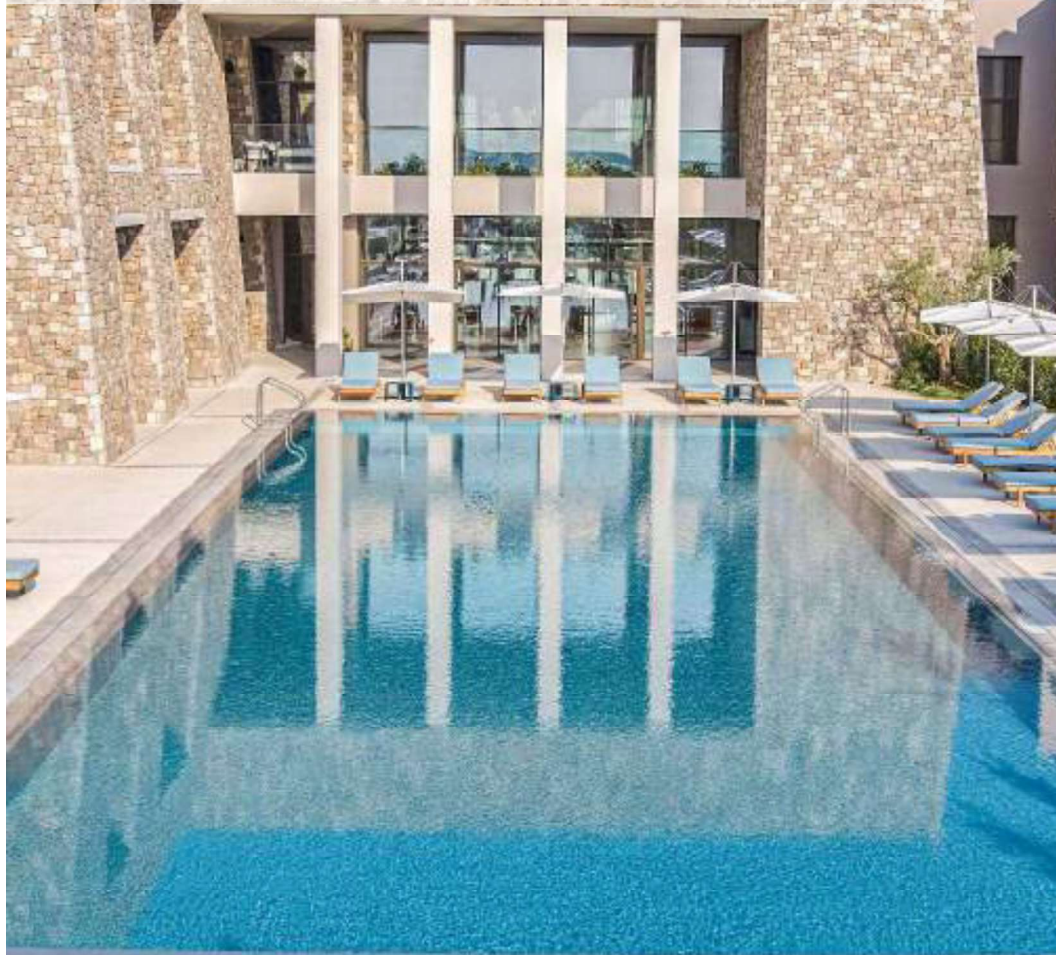
- Body Scrub
- Body Wrap
- Couples Massages
- Eye treatments
- Facials
- Foot Bath
- In-Suite Massages
- Lap Pool
- Lip Treatment
- Makeup Services
- Manicures/Pedicures
- Massages
- Men's Services
- Scalp & Hair Treatment
- Separate Men & Women's Lounges
- Steam Room
- Waxing

*fees apply



FIT GYM

A fully kitted-out gym with state-of-the-art equipment and the opportunity to train both indoors and outdoors. Take advantage of the 25-m-long heated lap pool to improve your swimming skills, or opt-in for our Yoga and fitness classes.



Fitness Classes • Fitness Counselling Services

WET DECK

Music, art, fashion and a 360 way of living fuse at the WET Deck, where lounging, swimming, and unwinding in style are followed by dance and stellar entertainment.

